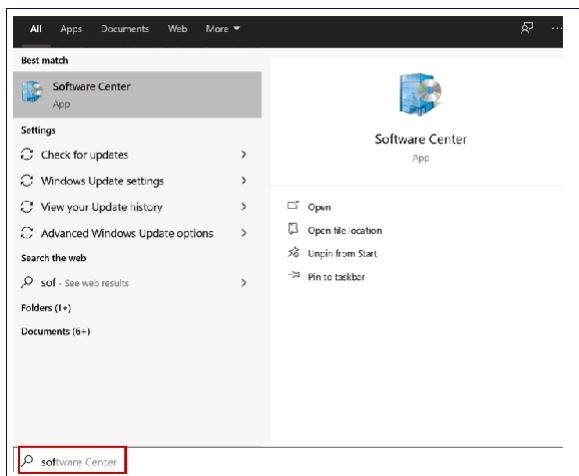


# Perceptive Content 7.3 Install Instructions

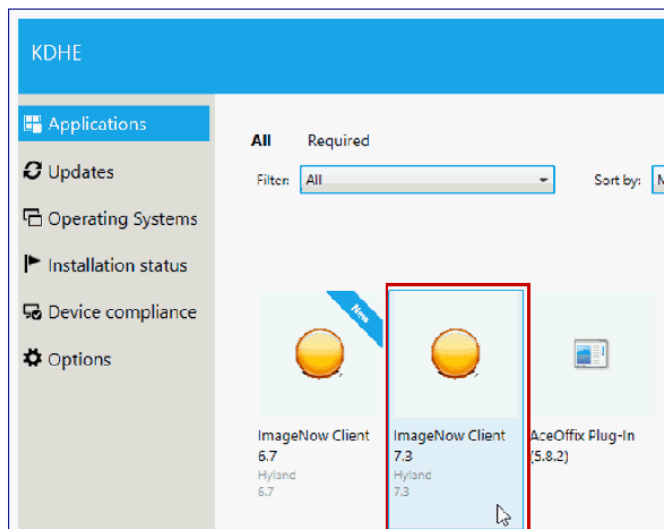
If not in the office, **make certain you are connected to the VPN.**

All steps for **Perceptive Content 7.3 Install** must be followed in order:

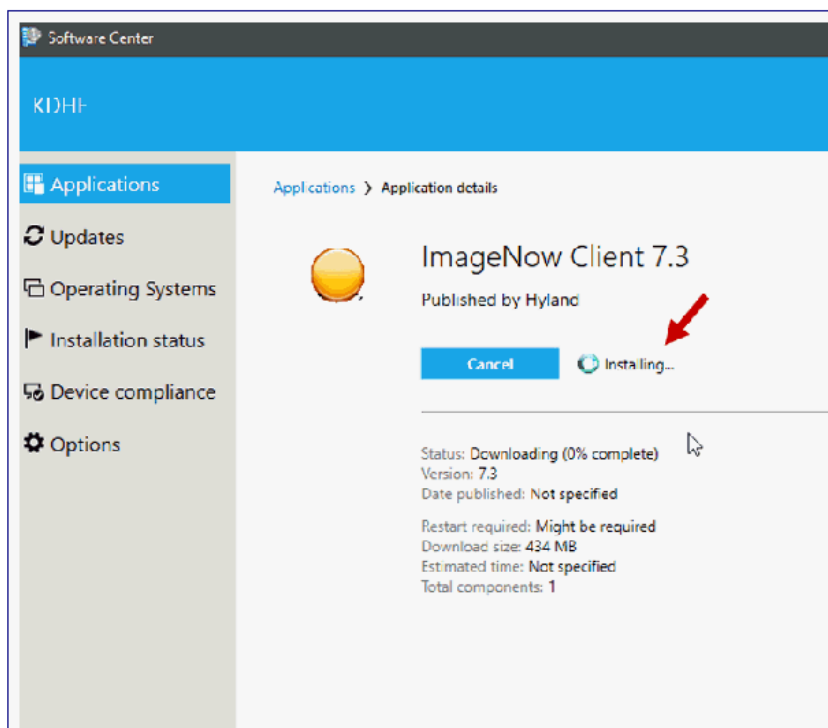
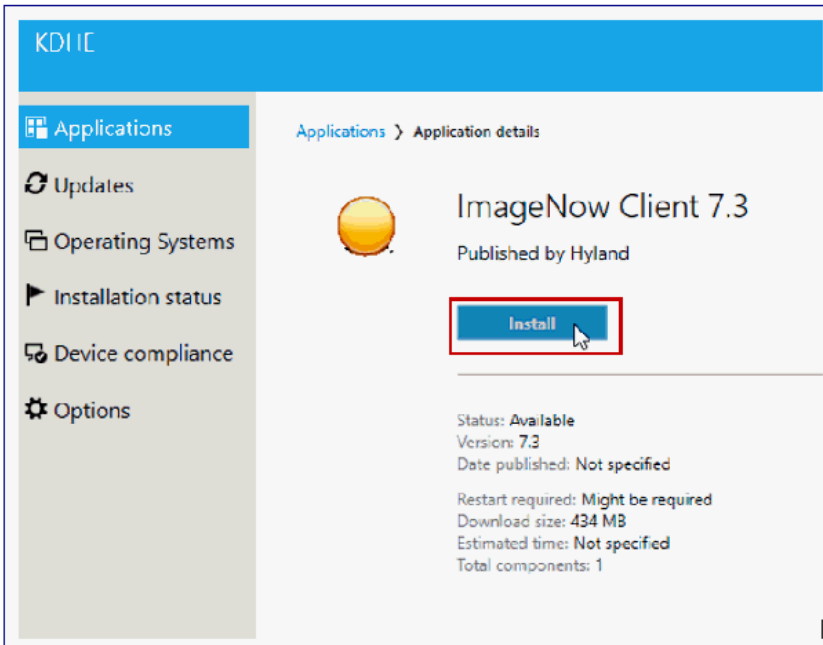
1. From the **Start** menu type *Software Center* and launch.

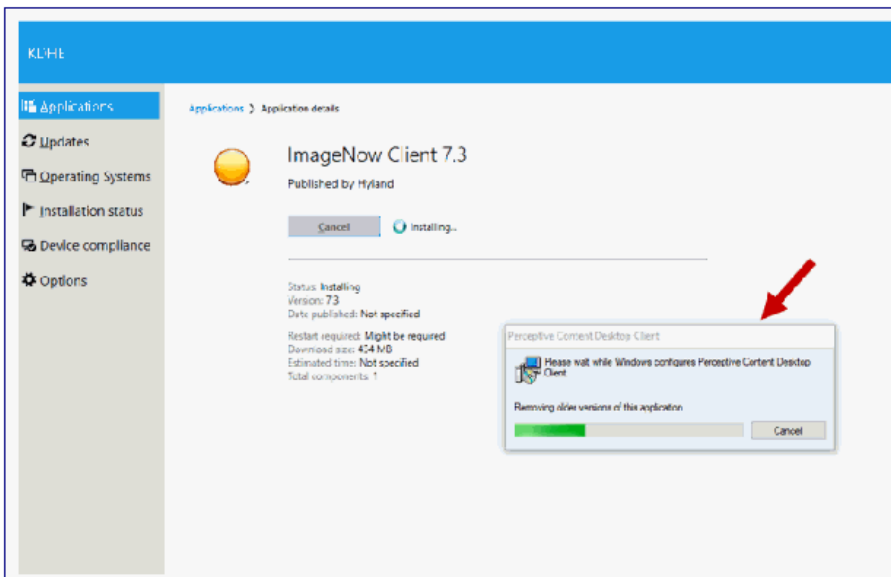
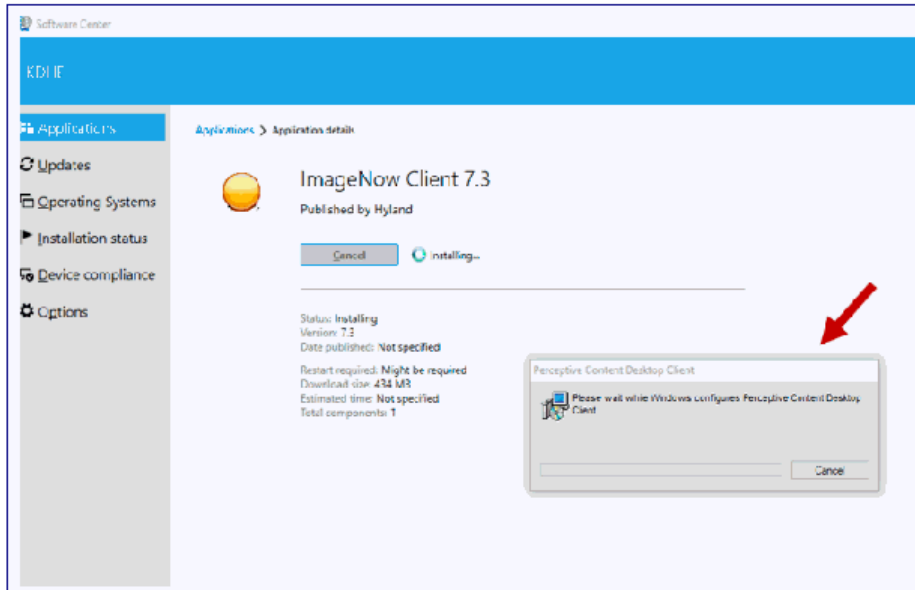


2. Choose **ImageNow Client 7.3.**



### 3. Click **Install**.

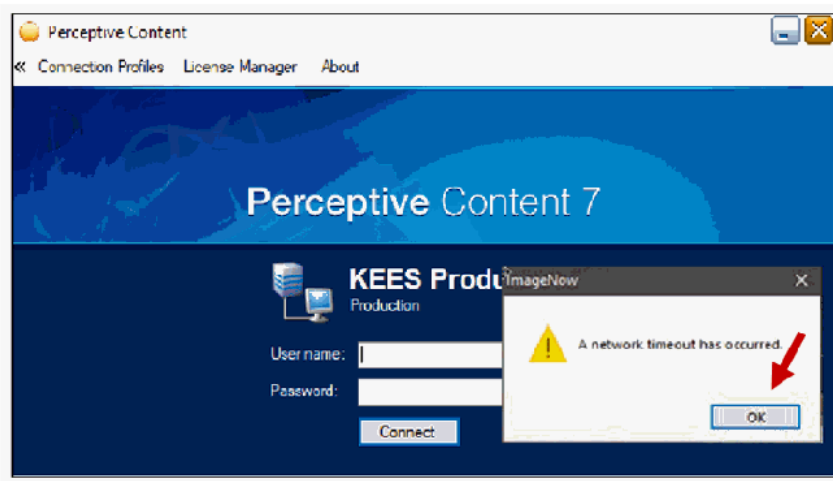




- To ensure it installed correctly, launch the **Perceptive Content** application icon from your desktop.



5. If you see this error. Choose **OK**.



6. Complete the steps to create your Perceptive Content Connection Profile Instructions.

7. If you are not able to successfully install using these instructions, please create an EBIT ticket using the email address EBITSM@ks.gov with subject line of **Attention: KEES Image Now Issue**.